



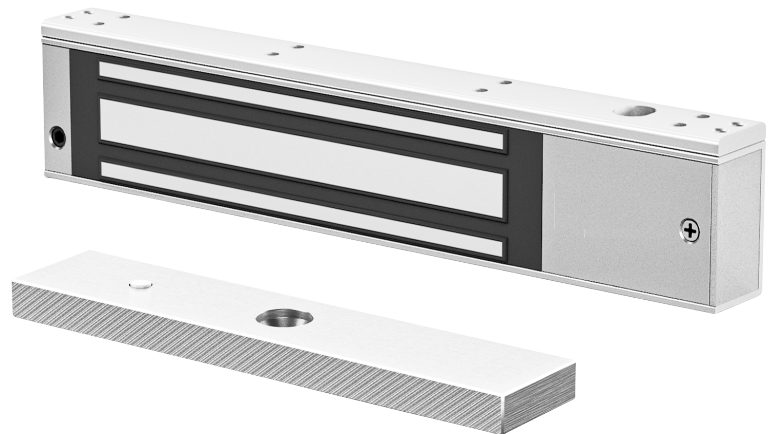
## 280KG Single Door Magnetic Lock

### Model: SUD-280AS

Suitable for Glass door, Wooden door, Fireproof door,  
Sliding door and Metal door;  
Can fixed with single door magnetic lock;  
600lbs is the holding force; Aluminum is  
the main material.

#### ► Product Parameter

Model	SUD-280AS
Lock signal	✓
Door signal	✗
Time delay	✗
Holding force	280KG(600Lbs)
Dimension	250L*47W*26H(mm)
Voltage	DC12V / or DC24V(switchable)
Current	12V/480mA 24V/240mA
Weight	2KG
Package	12pcs/carton



#### ► Dimensions

