

产品承认书

Specification for Approval

产品类型 (Product Type): Lithium Ion Battery Pack (锂离子电池组)

产品型号 (Product Model): 18650/1S2P/6000mAh/3.6V(华橙)

产品立项号 (File No.): 01DQ0023-50T

钜大料号 (Large P/N): L1.01. 01DQ0023-50T

规格书版本号 (SPEC Edition): A/1

客户料号 (Customer P/N): _____

制造商：东莞市钜大电子有限公司

Manufacturer: Dongguan Large Electronics Co., Ltd.

编制/日期 (Prepared By/Date)	审核/日期 (Checked By/Date)	批准/日期 (Approved By/Date)
尤彦锋/2022-1-21	腾建平/2022-1-21	

客户名称：

Customer 's Name:

测试/日期 (Test by/Date)	审核/日期 (Checked By/Date)	批准/日期 (Approved By/Date)	公司公章 (Company Stamp)

产品规格书

Product Specification

产品类型 (Product Type): Lithium Ion Battery Pack (锂离子电池组)

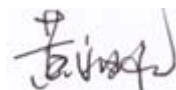
产品型号 (Product Model): 18650/1S2P/6000mAh/3.6V(华橙)

产品立项号 (File No.): 01DQ0023-50T

钜大料号 (Large P/N): L1.01. 01DQ0023-50T

东莞市钜大电子有限公司

Dongguan Large Electronics Co., Ltd.

编制/日期 (Prepared By/Date)	审核/日期 (Checked By/Date)	批准/日期 (Approved By/Date)
尤彦锋/2022-1-21	腾建平/2022-1-21	

Amendment Records

(修正记录)

Edition (版本)	Description (记述)	Prepared by (编制)	Approved by (批准)	Date (日期)
A/0	First Edition 首次发行	尤彦锋		2021-4-6
A/1	变更弹片供应商	尤彦锋		2022-1-21

LARGE BATTERY

Product Summary 产品概要

1、Standard 标准

Reference standard for design of the finished battery pack: CB (IEC62133:2017).

本成品电池设计参考标准：CB (IEC62133:2017)

2、Production description 产品描述

a) Name 名称：Li-ion Battery (锂离子电池)

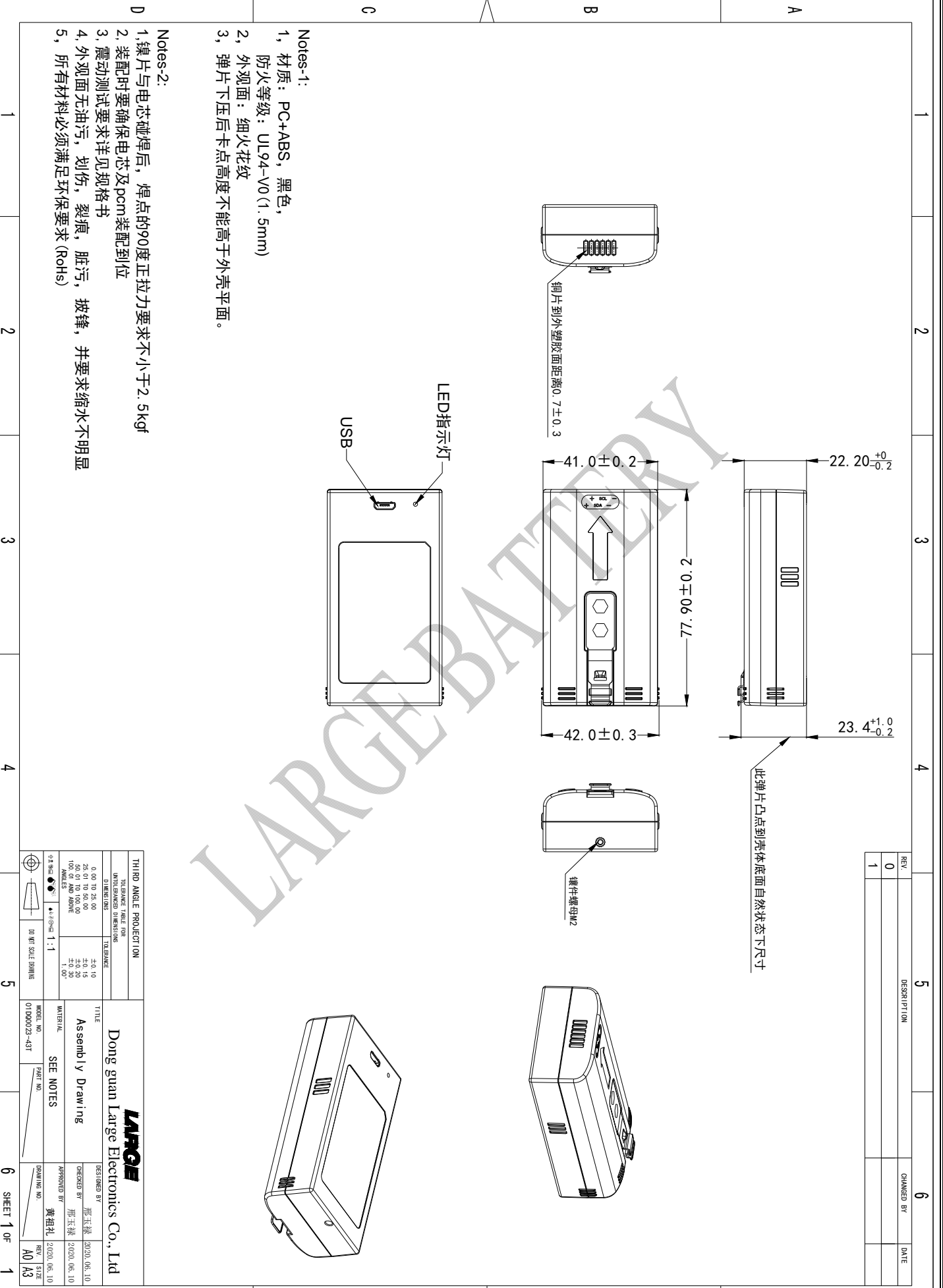
b) Model 型号：18650/1S2P/6000mAh/3.6V

c) Cell 电芯：N18650CP/3200mAh/3.6V-BAK

d) Shelf period 保质期限：1 年

e) Structure Drawing 电池结构图：(mm)

LARGE BATTERY



- Notes-1:
- 1, 材质: PC+ABS, 黑色, 防火等级: UL94-V0 (1.5mm)
 - 2, 外观面: 细火花纹
 - 3, 弹片下压后卡点高度不能高于外壳平面。

- Notes-2:
- 1, 弹片与电芯碰撞后, 焊点的90度正拉力要求不小于2.5kgf
 - 2, 装配时要确保电芯及pcn装配到位
 - 3, 震动测试要求详见规格书
 - 4, 外观面无油污, 划伤, 裂痕, 脏污, 披锋, 并要求缩水不明显
 - 5, 所有材料必须满足环保要求 (RoHs)

REV	DESCRIPTION	CHANGED BY	DATE
0			
1			

THIRD ANGLE PROJECTION		TOLERANCE TABLE FOR UNTOLERANCED DIMENSIONS	
DIMENSIONS	TOLERANCE	DIMENSIONS	TOLERANCE
0.00 TO 25.00	±0.10	25.01 TO 50.00	±0.15
25.01 TO 100.00	±0.20	100.01 AND OVER	±1.00*
ANGLES		±1.00°	
HATCHING		AS SHOWN	
DD WT SCALE DIMENS		1:1	

TITLE		DESIGNED BY	
Dong guan Large Electronics Co., Ltd		邢玉禄	
Assembly Drawing		CHECKED BY	
SEE NOTES		邢玉禄	
MATERIAL		APPROVED BY	
黄相礼		2020.06.10	
MODEL NO		DRAWING NO	
01000023-43T		A0/A3	

1、Scope and standard 适用范围及依据标准

1.1 Scope 适用范围

This specification is applied to battery manufactured by Large Electronics Co., Ltd.

本产品规格书适用于东莞市钜大电子有限公司提供的锂离子电池。

2、Specification 主要技术参数

NO 序号	Items 项目	Parameter 参数	Remarks 备注
2.1	Nominal capacity 标称容量	6000mAh	Discharge:1200mA 放电
	Rated Capacity 额定容量	5900mAh	cut-off voltage:2.5V 截止电压
2.2	Energy 能量	21.6Wh	
2.3	Nominal Voltage 标称电压	3.6V	
2.4	Open Voltage 出厂电压	3.7V~3.9V	
2.5	Load Voltage 负载电压	≥3.6V	10Ω
2.6	Internal Impedance 内阻	≤250mΩ	AC 1KHz after standard charge 标准充电后 AC 1KHz 测 试
2.7	Charge voltage 充电电压	4.2V	USB 口：5V 1.0A 充电
2.8	Standard charge current 标准充电电流	1200mA	Ambient temperature 0-10°C
2.9	Max charge current 最大充电电流	2000mA	Ambient temperature 10°C-45°C
2.10	Standard discharge current 标准放电电流	1200mA	Ambient temperature -20°C-60°C
2.11	Max discharge current 最大放电电流	2000mA	Ambient temperature 20°C-45°C

2.12	Discharge cut-off voltage 放电截止电压	2.5V	
2.13	Operating Temperature 工作温度	0~+45°C	Charge 充电
		-20~+60°C	Discharge 放电
2.14	Storage Temperature 贮存温度	-20°C ~60°C	Less than 1 month 小于 1 个月
		-20°C ~ 45 °C	Less than 3 month 小于 3 个月
		-20°C~ 25 °C	Less than 12 month 小于 12 个月
2.15	Weight 重量	About 130 g	

3. Battery configuration 电池组成

NO 序号	Item 项目	Criteria 标准	Remarks 备注
3.1	Cell 电芯	N18650CP/3200mAh/3.6V-BAK	Li-ion
3.2	PCM	IC : BQ27542DRZR-G1,单节电量管理 IC , SON-12,HF,TI IC : FP8102 SOP-8L(EP) ROHS IC:MM3280J04NRH, 单 节 保 护 IC,SOT-23-6,无卤,MITSUMI MOS:SL8811,Dual-N,TSSOP-8,HF,SOLOS EMI	LARGE-0303-0109-V1.0

4. Battery Performance Test 电池性能检查及测试

4.1 Appearance 外观和结构

There shall be no such defect as scratch, bur and other mechanical scratch, and the connector should be no rust dirt. The structure and dimensions see attached drawing of the battery.

电池的表面应无明显的划痕毛刺及其其它机械划伤，外露的金属端子应无锈蚀污垢。结构尺寸见电池的外形尺寸图。（见附件：电池结构图）

4.2 Test Equipment 测试设备要求

(1) Dimension Measuring Instrument 尺寸测量设备

The dimension measurement shall be implemented by instruments with accuracy no less than 0.01mm.

测量尺寸的仪器的精度应不小于 0.01mm

(2) Voltmeter 电压表

Class with national standard or more sensitive class with inner impedance not less than 10 K Ω /V.

国家标准或更灵敏等级,内阻不小于 10 K Ω /V.

(3) Ammeter 电流表

Class with national standard or more sensitive class. Total external resistance including ammeter and wire is less than 0.01 Ω .

国家标准或更灵敏等级,外部总内阻包括电流表和导线应小于 0.01 Ω .

(4) Impedance Meter 内阻测试仪

Impedance shall be measured by a AC impedance method (AC 1kHz LCR meter).

内阻测试仪测试方法为交流阻抗法(AC 1kHz LCR).

4.3 Standard Test Condition 标准的测试条件

Test should be conducted with new batteries within one month after shipment from our factory and the cells shall not be cycled more than five times before the test. Unless otherwise defined, test and measurement shall be done under temperature of 23 \pm 2 $^{\circ}$ C and relative humidity of 45~85%.

测试电池必须是本公司出厂时间不超过一个月的新电池,且电池未进行过五次以上充放电循环。除非其它特殊要求,本产品规格书规定的测试的环境条件为:温度 23 \pm 2 $^{\circ}$ C,相对湿度 45%~85%。

4.4 Standard Charge 标准充电

1200mA Full charge condition: Constant current 1200mA, Constant voltage 4.2V for 6.5 hours in all at 23 \pm 2 $^{\circ}$ C. 1200mA 4.2V (CC-CV) 总充电时间不超过 6.5 小时,其中在 23 \pm 2 $^{\circ}$ C 环境下充电。

4.5 Common Performance 产品的常规性能

No	Items/项目	Testing method and determinant standard /测试方法和判定标准
1	Charge Performance 充电性能	The battery can be charged when using the original charger. The standard charge mode :under the temperature of $23\pm 2^{\circ}\text{C}$,charge the battery with the current of 1200mA until the voltage reaches up to 4.2V, then charge with constant voltage until the charge current $\leq 120\text{mA}$, then stop charging. 使用原装充电器能够充电。标准充电模式 :在 $23\pm 2^{\circ}\text{C}$ 条件下,电池用 1200mA 充电,当电池电压达到 4.2V 时改为恒压充电,直到充电电流小于或等于 120mA 时停止充电。
2	Discharge Performance 放电性能	When connecting with load, the battery can supply power. Charge the battery with standard charge mode, then rest for 0.5h, then discharge with 1200mA until the voltage is 2.5V, and the discharge time is required $\geq 255\text{min}$. 电池外接负载能够供电。将电池按标准充电模式充好电后,开路搁置 0.5h,再以 1200mA 放电至 2.5V,要求放电时间 $\geq 255\text{min}$ 。
3	Cycle Performance 循环寿命	Under the temperature of $23\pm 2^{\circ}\text{C}$, charge the battery with 1200mA, when the voltage reaches up to 4.2V charge with constant voltage until the charge current $\leq 120\text{mA}$, then stop charging, rest for 0.5h, then discharge with 1200mA to 2.5V. Cycle with the above mode, when the continuous discharge time $< 80\%$ stop cycling. The cycle life is required ≥ 300 times. 在 $23\pm 2^{\circ}\text{C}$ 条件下电池按 1200mA 充电,当电压达到 4.2V 时改为恒压充电,直到充电电流小于或等于 120mA 时停止充电,静置 0.5h 后,1200mA 放电至 2.5V 的方式进行循环,当连续三次放电容量 $<$ 初始容量 80%时寿命为终止,要求循环寿命 ≥ 300 次。
4	Charged Storage Characteristics 荷电保持能力	Charge the battery with 1200mA, then shift to charge with constant voltage until the voltage reaches up to 4.2V, when the charge current $\leq 120\text{mA}$ stop charging; rest under the temperature of $23\pm 2^{\circ}\text{C}$ for 28d then discharge with 1200mA to 2.5V. The discharge time is required $\geq 4.25\text{h}$. 电池按 1200mA 充电,当端电压达到 4.2V 时改为恒压充电,充电电流小于或等于 120mA 时,充电停止;将电池开路放置在 $23\pm 2^{\circ}\text{C}$ 条件下 28 天后,以 1200mA 放电至 2.5V,要求放电时间 $\geq 4.25\text{h}$ 。

5	Storage Characteristics 存放性能	<p>Charge the battery, which is newly manufactured shorter than 3 months, with 2000mA until the capacity reaches to 40~50%, after resting for 12 months under the temperature of 23±2°C and the humidity of 45~75%, then charge with 2000mA to 4.2V then shift to charge with constant voltage, after full-charge rest for 0.5h, then discharge with 1200mA to 2.5V. The discharge time is required ≥4h.</p> <p>将生产日期到实验日期不足 3 个月的电池按 1200mA 充入 40~50%容量后, 放置在温度 23±2°C、湿度为 45~75%的环境中开路存放 12 个月后, 电池按 2000mA 充电至 4.2V 时改为恒压充电, 充饱后; 静置 0.5h, 再以 1200mA 放电至 2.5V, 要求放电时间≥4h。</p>
---	---------------------------------	--

4.6 Safety Performance 产品可靠性

No	Items/项目	Test method and determinant standard /测试方法和判定标准
1	High Temperature Characteristics 高温性能	<p>Under the temperature of 23±2°C, after charging the battery with 1200mA then put the battery into the constant temperature and humidity oven with 55±2°C for 2h, then discharge with 1200mA to 2.5V. The discharge time is required ≥255min and the battery should no deformation and smoking.</p> <p>在 23±2°C条件下, 电池按 1200mA 充电结束后, 将电池放入 55±2°C的恒温恒湿箱中恒温 2h 后, 然后以 1200mA 电流放电至 2.5V, 要求放电时间 ≥255min, 且电池外观无变形、冒烟。</p>
2	Low Temperature Characteristics 低温性能	<p>Under the temperature of 23±2°C, after charging the battery with 1200mA, then put the battery into the constant temperature and humidity oven with -10±2°C for 16~24h, then discharge with 1200mA to 2.5V. The discharge time is required ≥3h and the battery should no deformation and smoking.</p> <p>在 23±2°C条件下, 电池按 1200mA 充电结束后, 将电池放入-10±2°C的恒温恒湿箱中恒温 16~24h, 然后以 1200mA 电流放电至 2.5V, 要求放电时间 ≥3h, 且电池外观无变形、冒烟。</p>
3	Overcharge Protection Characteristics 过充电保护性能	<p>After full-charging the battery with 1200mA and set 1.2 times of the nominal voltage and current as constant current and voltage supply, then load it to the battery for 8h. It is required the battery should be no leakage, deformation, smoking and explosion during the test processes.</p> <p>电池按 1200mA 充满电后, 再将恒流恒压源设定为 1.2 倍标称电压、电流, , 然后加载于电池上 8h, 要求试验过程中电池不漏液、变形、冒烟和爆炸。</p>

4	<p>Over-discharge Protection Characteristics 过放电保护性能</p>	<p>Under the temperature of $23\pm 2^{\circ}\text{C}$, after discharging the battery with 1200mA to 2.5V, then connect the load with 30Ω and discharge for 24h. It is required the battery should be no leakage, fire, smoking and explosion during the test processes. 在 $23\pm 2^{\circ}\text{C}$条件下,电池按 1200mA 放电至 2.5V 后,外接 30Ω 负载再放电 24h,要求实验过程中电池不漏液、起火、冒烟和爆炸</p>
5	<p>Short-circuit Protection Characteristics 短路保护性能</p>	<p>Under the temperature of $23\pm 2^{\circ}\text{C}$, after full-charging the battery with 1200mA, then make the battery' s anode and cathode short-circuit for 1h (the connecting resistance is smaller than $100\text{m}\Omega$), then cut the anode and cathode, after the battery momentary charge by 2000mA current , the voltage should come back to 3.6V, and there should be no leakage, deformation, smoking and explosion during the test processes. 在 $23\pm 2^{\circ}\text{C}$条件下,电池按 1200mA 充满电后,将电池正负极短路(外接电阻小于 $100\text{m}\Omega$)持续 1h,再将电池正负极断开,电池以 2000mA 瞬时充电后电压应不小于 3.6V,且试验过程中电池不漏液、变形、冒烟和爆炸。</p>
6	<p>Constant Humidity and Temperature Characteristics 恒定湿热性能</p>	<p>Under the temperature of $23\pm 2^{\circ}\text{C}$, after charging the battery with 1200mA, then put the battery into the constant temperature and humidity oven with $40\pm 2^{\circ}\text{C}$ and 90~95% for 48h, the battery should be no obvious deformation, leakage, rust, smoking and explosion. After testing take out the battery then rest for 2h under the temperature of $23\pm 2^{\circ}\text{C}$, discharge with 2000mA to 2.5V. The discharge time is required $\geq 36\text{min}$. 在 $23\pm 2^{\circ}\text{C}$条件下,电池按 1200mA 充电结束后,放入 $40\pm 2^{\circ}\text{C}$,湿度 90~95%的恒温恒湿箱内 48h,电池应无明显变形、漏液、生锈、冒烟或爆炸,试验结束后将电池取出搁置 2h,在 $23\pm 2^{\circ}\text{C}$条件下,以 2000mA 放电至 2.5V,要求放电时间$\geq 72\text{min}$。</p>
7	<p>Drop Test 跌落实验</p>	<p>Under the temperature of $23\pm 2^{\circ}\text{C}$, after full-charging the battery with 1200mA, then drop it freely from 1 meter height onto the hard board which 18~20mm thick (6 times each of X, Y, Z with positive and negative directions).The battery should be no smoking and explosion 在 $23\pm 2^{\circ}\text{C}$条件下,电池按 1200mA 充满电后,将电池从 1 米高度自由跌落至厚度为 18~20mm 的硬木板上(X、Y、Z 正负方向 6 个方向每个方向分别朝下跌落一次)电池应不冒烟、爆炸。</p>

4.7 Rest Period 搁置时间

Unless otherwise defined, 30 min, rest period after charge; 30 min, rest period after discharge.

如无特殊要求，电池充放电间隔为 30min。

5、 Storage and Others 贮存及其它事项

5.1 Long Time Storage 长期贮存

If stored for a long time (exceed three months), the cell should be stored in dry and cooling place.

The cell' s storage voltage should be 3.8~3.9V and the cell is to be stored in a condition as appendix No. 4

长期贮存的电池（超过 3 个月）须置于干燥、凉爽处。贮存电压为 3.8~3.9V 且贮存环境要求如附录 4

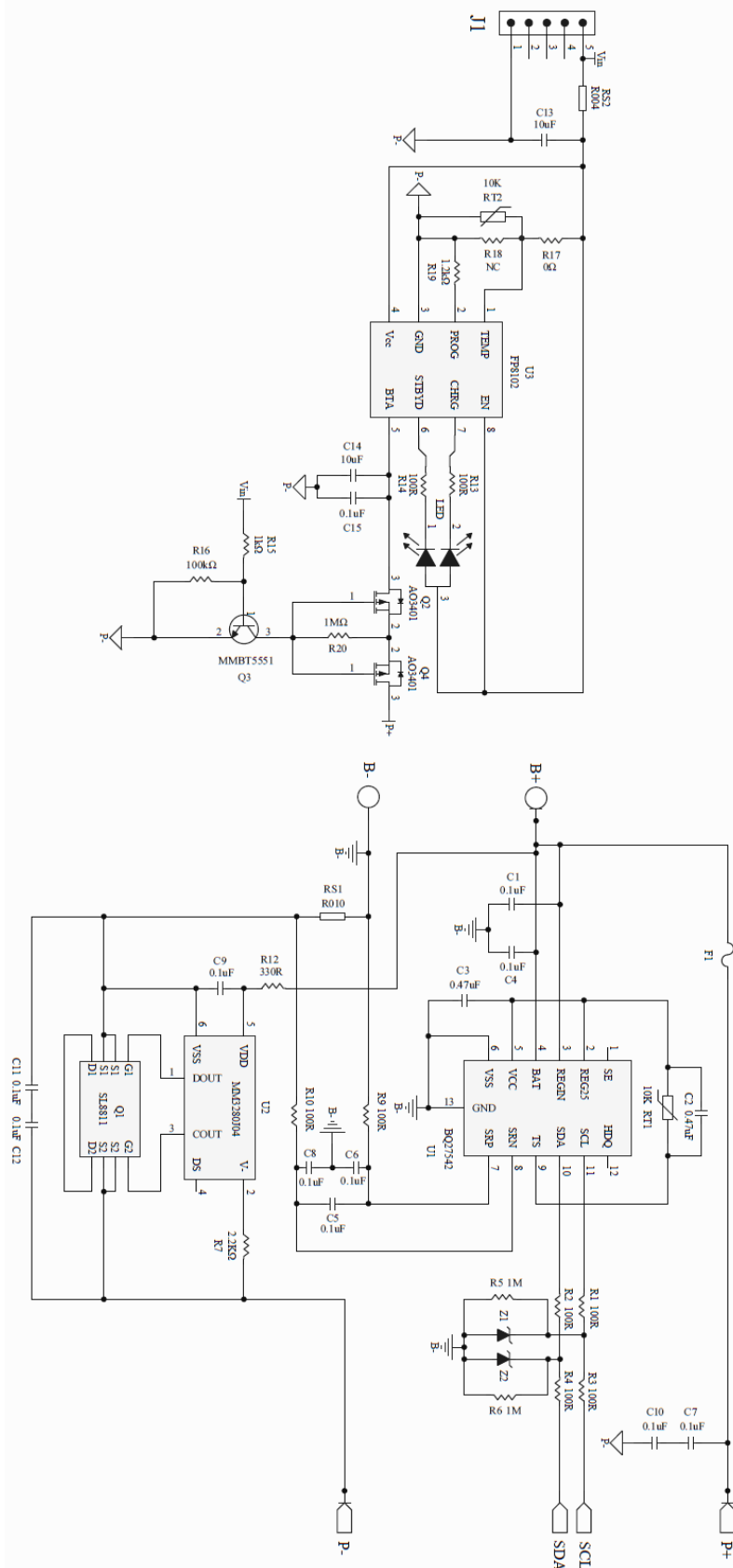
5.2 Others 其它事项

Any matters that this specification does not cover should be conferred between the customer and LARGE.

任何本说明书中未提及的事项，须经双方协商确定。

6、Protection Circuit 保护电路

6.1 Circuit Diagram 电路原理图

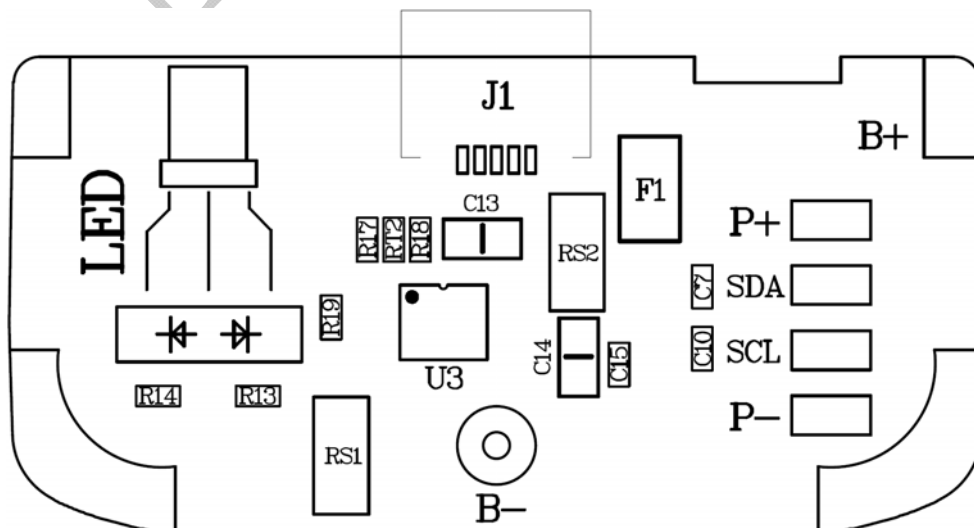


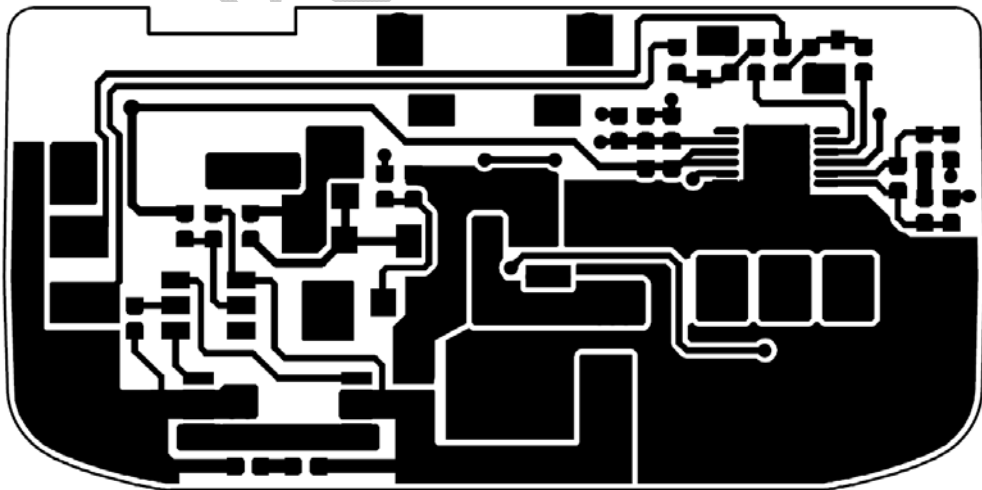
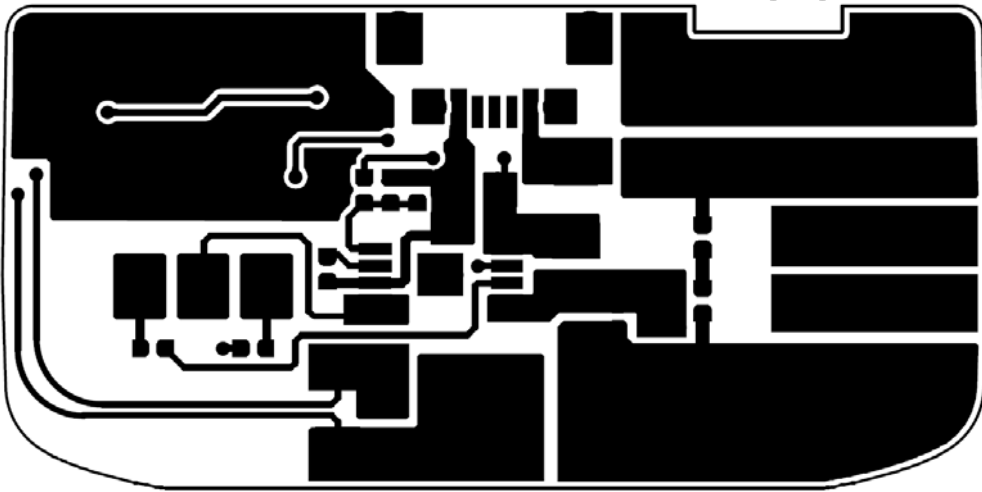
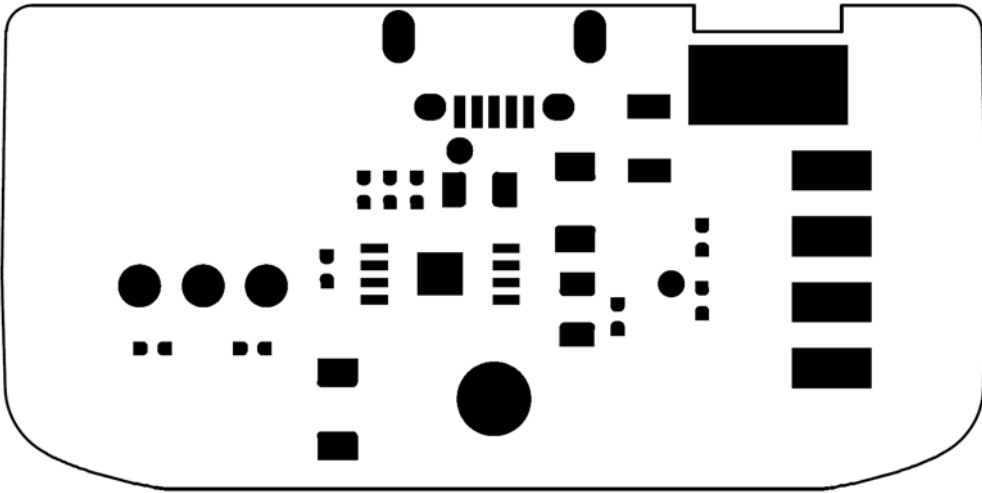
6.2 PCM parameter PCM 参数

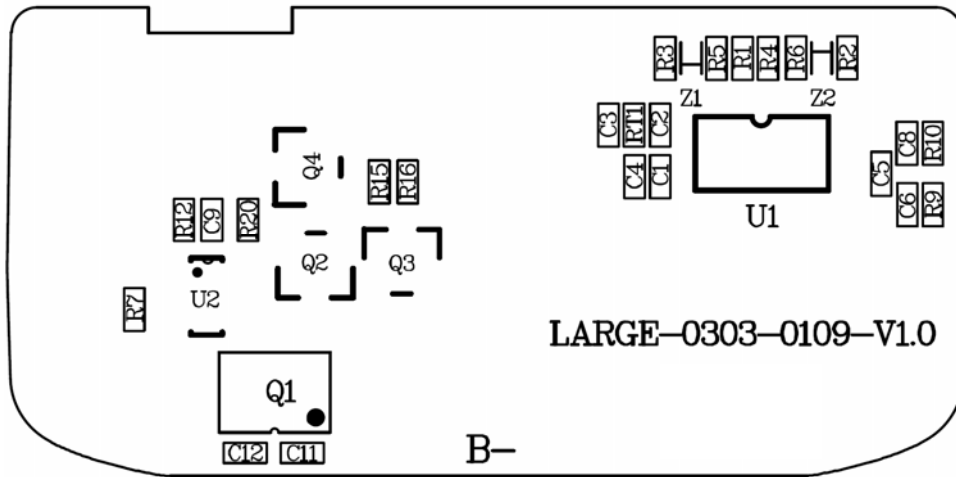
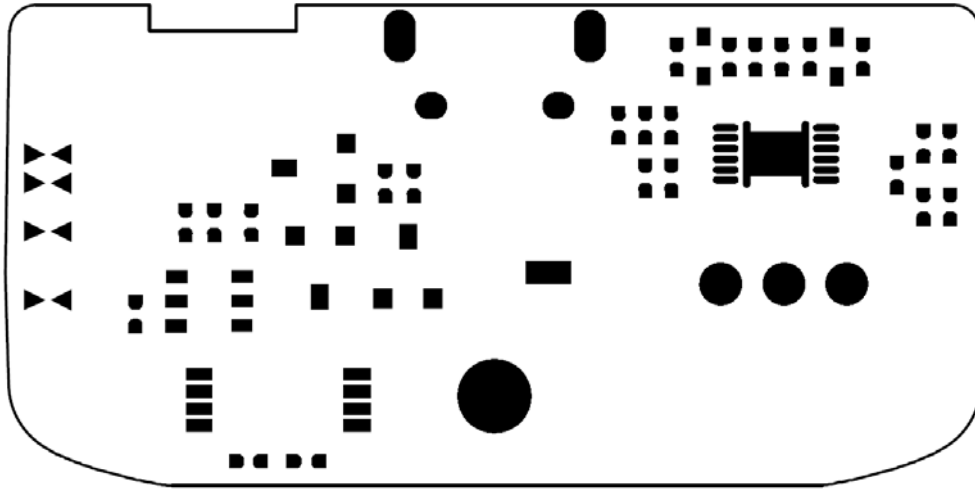
No	Item	Condition	Specification
1	输入电压/input Voltage	B+/B-间输入电压/input Voltage B+ to B-	3.0~4.3V
2	过充电 Overcharge	保护电压/Detection voltage	4.275±0.025V
3		恢复电压/ Release voltage	4.215±0.030V
4		保护延迟时间/ Detection delay time	0.8~1.2s
5	过放电 Over discharge	保护电压/Detection voltage	3.00±0.035V
6		恢复电压/ Release voltage	3.20±0.100V
7		保护延迟时间/ Detection delay time	76.8~115.2ms
8	放电过流	放电过流保护电流/Over current	4.6 ~ 8.8A
9	Over discharge current	放电过流保护延时/delay time	16~24ms
	充电过流 Over charge current	充电过流保护电流/Over curren	2.6 ~ 6.5A
		充电过流保护延时/delay time	9.6~14.4ms
10	短路保护	短路保护延时/ Short detection delay time	210~420us
11		恢复条件/Release Conditions	断开负载/Cut off load
12	自耗电	工作状态自耗电	Max 200uA
13	0V 充电/0V charger	是否允许 0V 充电/allowed 0V change	YES
14	建议工作条件 Suggest working conditions	建议最大持续充/放电电流 max continuous charge/discharge current	2.0A

15		建议工作温度/suggest working temperature	-20-60°C
16	内阻/IR resistance	PCM 内阻/ IR of PCM	≤100 mΩ
17	充电管理 Chargeable battery	充电电压 charging voltage	4.15~4.25V
18		充电电流 charging current	0.9~1.1A
19	NTC 规格/NTC resistance	20°C~30°C	8.0~12.0KΩ
20	PCM 尺寸 The size of final PCM	长度/ The length of final PCM	37.2±0.15mm
21		宽度/ The width of final PCM	18.3±0.15mm
22		厚度/ The thickness of final PCM	MAX:1.0±0.1mm
23	外观 Appearance	1) 没有元器件的破损/Nothing part deflection 2) 所有焊点良好/The status of solder is all right 3) PCM 没有翘曲/ PCM will not crook 4) 符合钨大的出货外观标准/ Settle forLARGE Module appearance standard	

6.3 PCB LAYOUT Drawing PCB 布局图



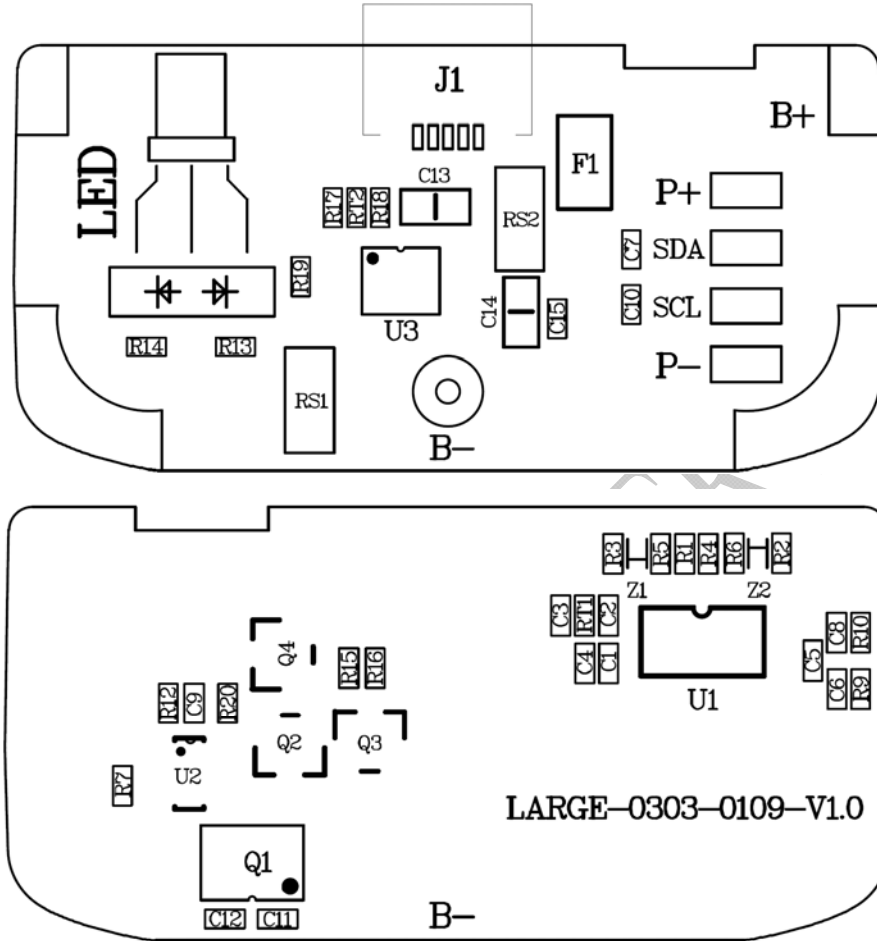




LARGE

6.4 PCM BOM 保护板 BOM 清单：

贴片图/SMT drawing



器件编号 Location	描述 Description	规格/part No. Specification	尺寸/封装 Size	数量 Qty	供应商 Vendor	环境 ROHS	备注 Remark
U1	IC	BQ27542DRZR-G1,单节电量管理 IC , SON-12,HF,TI(3K 一盘)	SON-12	1	TI	HF	主选
U2	IC	MM3280J04NRH,单节保护 IC,SOT-23-6,无卤,MITSUMI	SOT-23-6	1	MITSUMI	HF	
U3	IC	FP8102 SOP-8L(EP) ROHS	SOP-8L	1	FEELING-TEC H	ROHS	

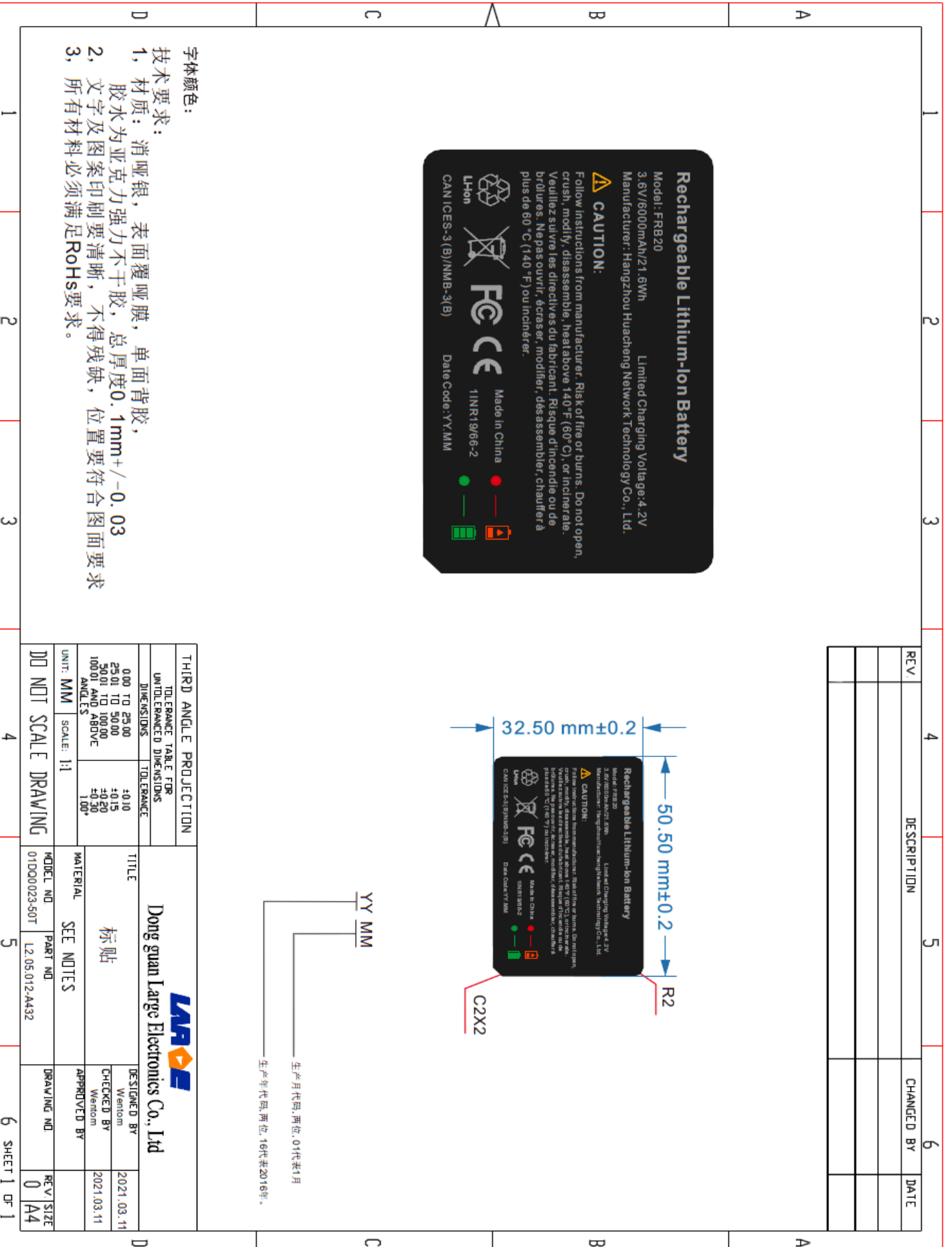
Q1	MOSFET	SL8811,Dual-N,TSSOP-8,HF,S OLOSEMI(5K 一盘)	TSSOP-8	1	SOLOSEMI	HF	
Q2,Q4	MOSFET	AO3401A,Single-P,SOT-23,HF, AOS	SOT-23	2	AOS	HF	
Q3	三极管	MMBT5551 , 三极管 , SOT-23 , ROHS,长电(3K 一盘)	SOT-23	1	长电		
RS1	合金电阻	RLM12FTCMR010 , 1206,10m Ω , $\pm 1\%$, 1W , HF , 大毅	1206	1	大毅		
RS2	合金电阻	RLM12FTCMR004 , 1206,4m Ω , $\pm 1\%$, 1W , HF , 大毅	1206	1	大毅		
F1	PTC	SMD1206P300SLR,1206,3A,6V ,HF,PTTC(4K 盘)	1206	1	PTTC		
Z1,Z2	稳压管	MM5Z5V6ST,5.6V , SOD-523 , 稳压二极管,HF,ST (4K 盘)	SOD-523	2	ST		
R17	贴片电阻	RC0402JR-070RL,0402, 0 Ω , $\pm 5\%$,1/16W,HF,YAGEO	0402	1	YAGEO		
R1,R2,R3,R4, R9,R10,R13,R14	贴片电阻	RC0402JR-07100RL,0402, 100 Ω , $\pm 5\%$,1/16W,HF,YAGEO	0402	8	YAGEO		
R12	贴片电阻	RC0402FR-07330RL,0402, 330 Ω , $\pm 1\%$,1/16W,HF,YAGEO	0402	1	YAGEO		
R15	贴片电阻	RC0402JR-071KL,0402, 1K Ω , $\pm 5\%$,1/16W,HF,YAGEO	0402	1	YAGEO		

R19	贴片电阻	RC0402FR-071K2L,0402, 1.2KΩ,±1%,1/16W,HF,YAGEO	0402	1	YAGEO		
R7	贴片电阻	0402,2.2KΩ,± 1%,1/16W,HF,YAGEO	0402	1	YAGEO		
RT1,RT2	贴片 NTC	CN0402R103B3435FT,0402 , 10KΩ,±1%,B=3435,HF,仙桥	0402	2	仙桥		
R16	贴片电阻	RC0402FR-07100KL,0402, 100KΩ,± 1% ,1/16W,HF,YAGEO	0402	1	YAGEO		
R5,R6,R20	贴片电阻	RC0402FR-071ML,0402, 1MΩ,±1%,1/16W,HF,YAGEO	0402	3	YAGEO		
C1,C4,C5,C6, C7,C8,C9,C10,C 11,C12,C15	贴片电容	CC0402KRX7R7BB104,0402,0. 1UF±10%,16V,X7R,HF,YAGEO	0402	11	YAGEO		
C2,C3	贴片电容	CC0402KRX5R6BB474,0402,0. 47uf,±10%,X5R,10V,无卤 素,YAGEO	0402	2	YAGEO		
C13,C14	贴片电容	CC0805KKX5R6BB106,0805,1 0UF,± 10%,X5R,10V,HF,YAGEO(2K/ 盘)	0805	2	YAGEO		
LED	插件 LED	插件发光二极管 3MM ,无边红绿	/	1	鸿集芯		

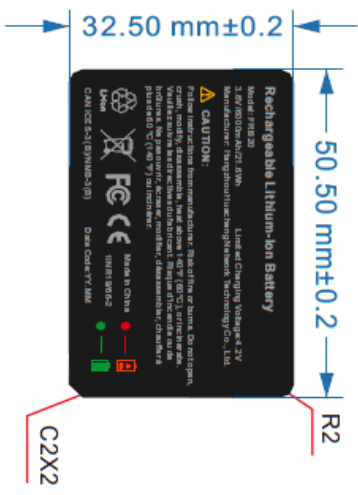
		双色 LED(共阳) 雾状, 白色胶体, ROHS, 鸿集芯					
J1	USB	PYS-5PUSB085 MICRO USB 5P 牛角 4.85MM 直边, 外壳脚 7.2 ROHS, 森义	/	1	森义		
LARGE-0303-0 109-V1.0	PCB	1SG-0328-V0, 单节电量管理, 37.2*18.3*1MM, 双层, 喷锡, 绿油, 铜厚 1.5OZ, ROHS	/	1			

LARGE BATTERY

7、Label Drawing 贴纸图纸



REV	DESCRIPTION	CHANGED BY	DATE



YY MM
 生产月代码,两位,01代表1月
 生产年代码,两位,16代表2016年。

- 字体颜色:
 技术要求:
 1, 材质: 消哑银, 表面覆哑膜, 单面背胶,
 胶水为亚克力强力不干胶, 总厚度0.1mm+/-0.03
 2, 文字及图案印刷要清晰, 不得残缺, 位置要符合图面要求
 3, 所有材料必须满足RoHS要求。

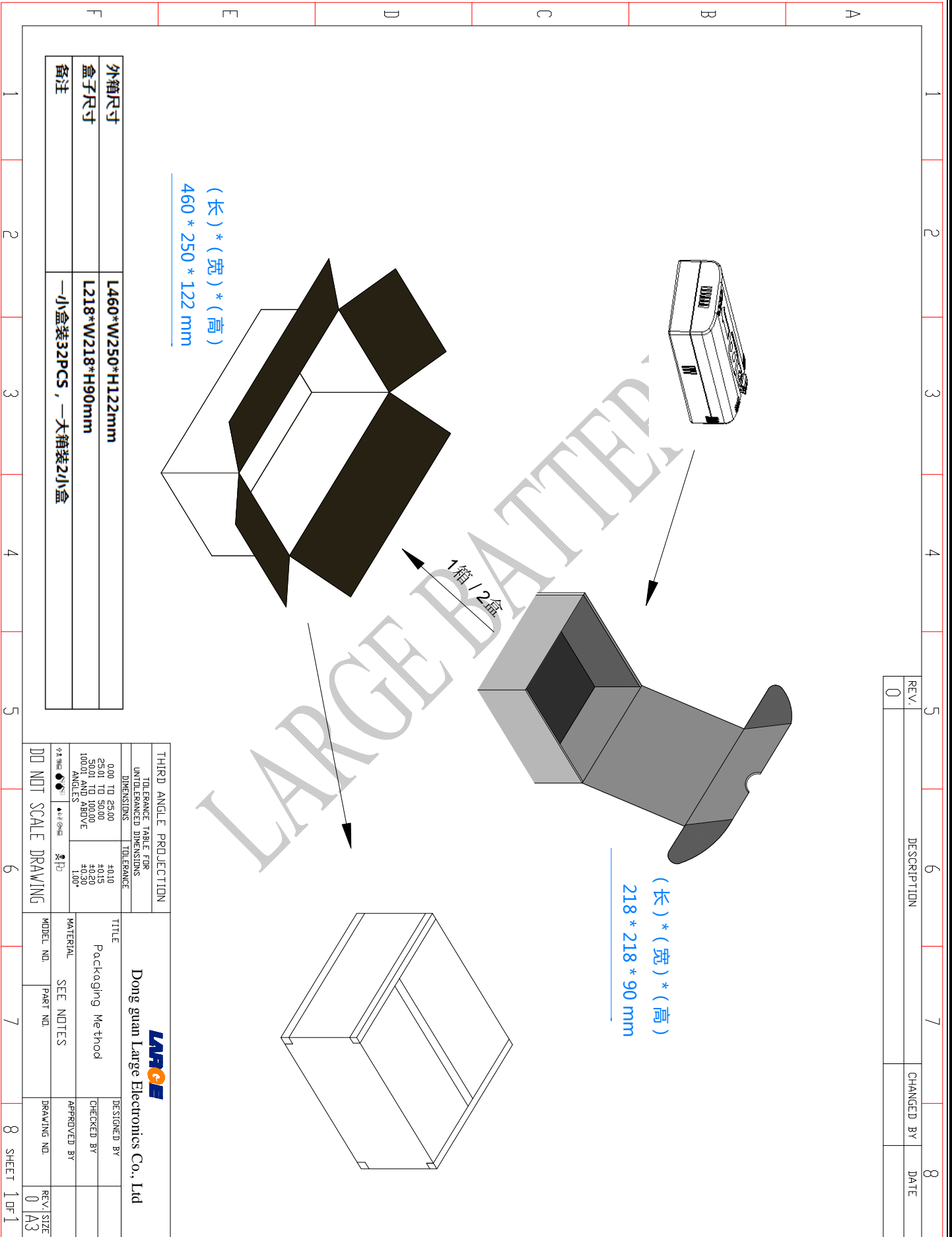
THIRD ANGLE PROJECTION		TOLERANCE TABLE FOR UNTOLERANCED DIMENSIONS	
DIMENSIONS	TOLERANCE	DIMENSIONS	TOLERANCE
0.00 TO 25.00	±0.10	0.00 TO 25.00	±0.10
25.01 TO 50.00	±0.15	50.01 TO 100.00	±0.20
50.01 TO 100.00	±0.30	100.01 AND ABOVE	±0.50
ANGLES	1.00°		
UNIT: MM	SCALE: 1:1		
D0 D01 SCALE DRAWING		MODEL NO	PART NO
		01D00023-50T	L2.05.012-4432
DRAWING NO		DESIGNED BY	DATE
		Wentom	2021.03.11
CHECKED BY		APPROVED BY	
Wentom			
2021.03.11			
REV	SIZE		
0	A4		

Dong guan Large Electronics Co., Ltd

标贴

SEE NOTES

8、Manner of packing 包装方式



外箱尺寸	L460*W250*H122mm
盒子尺寸	L218*W218*H90mm
备注	—小盒装32PCS, —大箱装2小盒

REV.	DESCRIPTION	CHANGED BY	DATE
0			

THIRD ANGLE PROJECTION		Dong guan Large Electronics Co., Ltd	
TOLERANCE TABLE FOR UNTOLERANCED DIMENSIONS		DESIGNED BY	
DIMENSIONS	TOLERANCE	CHECKED BY	APPROVED BY
0.00 TO 25.00	±0.10		
25.01 TO 50.00	±0.15		
50.01 TO 100.00	±0.20		
100.01 AND ABOVE	±0.30		
ANGLES	±0.5°		
FORMING	±0.1mm		
TITLE		DRAWING NO.	
Packaging Method		REV./SIZE	
MATERIAL		0	
SEE NOTES		A3	
MODEL NO.	PART NO.		
DD NOT SCALE DRAWING			

Appendix 附录
Handling Precautions and Guideline
For LIP (Lithium-Ion) Rechargeable Batteries
锂离子充电电池操作指示及注意事项

Preface 前言

This document of 'Handling Precautions and Guideline LI Rechargeable Batteries' shall be applied to the battery cells manufactured by Dongguan Large Electronics Co., Ltd.

本档“锂离子可充电电池操作指示及注意事项”仅适用于东莞市钜大电子有限公司生产的电池。

Note (1) : 声明一

The customer is requested to contact Dongguan Large Electronics Co., Ltd in advance, if and when the customer needs other applications or operating conditions than those described in this document. Additional experimentation may be required to verify performance and safety under such conditions.

客户若需要将电池用于超出本规格书规定以外的设备，或在本规格书规定以外的使用条件下使用电池，应事先联系东莞市钜大电子有限公司，因为需要进行特定的实验测试以核实电池在该使用条件下的性能及安全性。

Note (2) : 声明二

Dongguan Large Electronics Co., Ltd will take no responsibility for any accident when the cell is used under other conditions than those described in this Document.

对于在超出本规格书规定以外的条件下使用电池而造成的任何意外事故，东莞市钜大电子有限公司概不负责。

Note (3) : 声明三

Dongguan Large Electronics Co., Ltd will inform, in a written form, the customer of improvement(s) regarding proper use and handling of the cell, if it is deemed necessary.

如有必要，东莞市钜大电子有限公司会以书面形式告知客户有关正确操作使用电池的改进措施。

1、Charging 充电

1.1 Charging current 充电电流

Charging current should be less than maximum charge current specified in the Product Specification. Charging with higher current than recommended value may cause damage to cell electrical , mechanical, and safety performance and could lead to heat generation or leakage.

充电电流不得超过本规格书中规定的最大充电电流。使用高于推荐值电流充电将可能引起电池的充放电性能、机械性能和安全性能的问题，并可能会导致发热或泄漏。

1.2 Charging voltage 充电电压

Charging shall be done by voltage less than that specified in the Product Specification (4.2V/battery). Charging beyond 4.2V, which is the absolute maximum voltage, must be strictly prohibited. The charger shall be designed to comply with this condition.

充电电压不得超过本规格书中规定的额定电压 (4.2V/电池)。4.2V 为充电电压最高极限，充电器的设计应满足此条件。

It is very dangerous that charging with higher voltage than maximum voltage may cause damage to the cell electrical, mechanical safety performance and could lead to heat generation or leakage.

电池电压高于额定电压值时，将可能引起电池的充放电性能、机械性能和安全性能的问题，可能会导致发热或泄漏。

1.3 Charging temperature 充电温度

The cell shall be charged within 0°C~45 °C range in the Product Specification.

电池必须在 0°C~45 °C 的环境温度范围内进行充电。

1.4 Prohibition of reverse charging 禁止反向充电

Reverse charging is prohibited. The cell shall be connected correctly. The polarity has to be confirmed before wiring. In case of the cell is connected improperly, the cell cannot be charged. Simultaneously, the reverse charging may cause damaging to the cell which may lead to degradation of cell performance and damage the cell safety, and could cause heat generation or leakage.

正确连接电池的正负极，严禁反向充电。若电池正负极接反，将无法对电池进行充电。同时，反向充电会降低电池的充放电性能、安全性，并会导致发热、泄漏。

2、Discharging 放电

2.1 Discharging current 放电电流

The cell shall be discharged at less than the maximum discharge current specified in the Product Specification. High discharging current may reduce the discharging capacity significantly or cause over-heat.

放电电流不得超过本规格书规定的最大放电电流，大电流放电会导致电芯容量剧减并导致过热。

2.2 Discharging temperature 放电温度

The cell shall be discharged within $-20^{\circ}\text{C}\sim 60^{\circ}\text{C}$ range specified in the Product Specification.

电池必须在 $-20^{\circ}\text{C}\sim 60^{\circ}\text{C}$ 的环境温度范围内进行放电。

2.3 Over-discharging 过放电

It should be noted that the cell would be at an over-discharged state by its self-discharge characteristics in case the cell is not used for long time.. In order to prevent over-discharging, the cell shall be charged periodically (every six months) to maintain between $3.8\text{V}\sim 3.9\text{V}$.

需要注意的是，在电池长期未使用期间，它可能会因其自放电特性而处于某种过放电状态。为防止过放电的发

生，电池应定期充电(每 6 个月)，将其电压维持在 3.8V~3.9V 之间。

Over-discharging may causes loss of cell performance, characteristics, or battery functions

过放电会导致电芯性能、电池功能的丧失。

The charger shall be equipped with a device to prevent further discharging exceeding a cut-off voyage specified in the Product Specification. Also the charger shall be equipped with a device to control the recharging procedures as follows: The cell battery pack shall start with a low current 15 - 30 minutes, i.e. pre-charging, before rapid charging starts. The rapid charging shall be started after the (individual) cell voltage has been reached above 2.5V within 15 - 30 minutes that can be determined with the use of an appropriate timer for pre-charging. In case the (individual) cell voltage does not rise to 2.5V within the pre-charging time, then the charger shall have functions to stop further charging and display the cell/pack is at abnormal state.

充电器应有装置来防止电池放电至低于本规格书规定的截止电压。此外，充电器还应有装置以防止重复充电，步骤如下：电池在快速充电之前，应先以一小电流预充电 15~30 分钟，以使电池的电压达到 2.5V 以上，再进行快速充电。可用一计时器来实现该预充电步骤。如果在预充电规定时间内，电池的电压仍未升到 2.5V 以上，充电器应能够停止下一步快速充电，并显示该电芯/电池正处于非正常状态。

3. Protection Circuit Module 保护电路模块

The cell/battery pack shall be with a PCM that can protect cell/battery pack properly. PCM shall have functions of (1) overcharging prevention, (2) over-discharging prevention, (3) over current prevention to maintain safety and Prevent significant deterioration of cell performance. The over current can occur by external short circuit

电芯/电池包装应配有 PCM 板以正确保护电芯/电池。PCM 板应具有以下功能以保证安全并防止损坏电池性能：

(1) 过充保护功能 (2) 过放保护功能 (3) 过流保护功能。

3.1 overcharging protection: 过充保护电压

Overcharging protection function shall stop charging if any one of the cells of the battery pack reaches $4.275\pm 0.05V$;

当电池中任一电芯的电压达到 $4.275\pm 0.05V$ 时，过充电保护功能应立即启动并停止充电。

3.2 over-discharging protection: 过放电保护

Over-discharging prevention function shall work to avoid further drop in cell voltage of $3.0\pm 0.10V$

Or less per cell in any cell of the battery pack. It is recommended that the dissipation current of PCM shall be minimized to $70\mu A$ or less with the over-discharging prevention, the protection function shall monitor each bank of the battery pack and control the current all the time

当电池中任一电芯的电压降至 $3.0\pm 0.10V$ 以下时，过放保护功能应起保护作用以避免电芯的深度放电。推荐

PCM 板的静态电流小于 $70\mu A$ ，并具有过放保护功能。该保护功能应实时监控所有电芯；

4、Storage 贮存

The battery shall be storied within $-20^{\circ}C\sim 25^{\circ}C$ range environmental condition.

电池储存温度必须在 $-20^{\circ}C\sim 25^{\circ}C$ 的范围内。

If the battery has to be storied for a long time (Over 3 months), the environmental condition should be: Temperature: $23\pm 5^{\circ}C$, Humidity: $65\pm 20\%RH$

长期存储电池（超过 3 个月）须置于温度为 $23\pm 5^{\circ}C$ 、湿度为 $65\pm 20\%RH$ 的环境中。

The voltage for a long time storage shall be $3.8 V\sim 3.9V$ range.

贮存电压为 $3.8 V\sim 3.9V$ 。

5、Handling Instructions 电池的注意事项

Read and observe the following warnings and precautions to ensure correct and safe use of Li-ion batteries.

认真阅读下面的注意事项，确保正确使用锂离子电池。东莞市钜大电子有限公司对违反下述注意事项而产生的任何问题不予负责。

Danger!

危 险！

- Do not immerse the battery in water or allow it to get wet.
- 勿将电池投入水中或将其弄湿！
- Do not use or store the battery near sources of heat such as a fire or heater.
- 禁止在火源或极热条件下给电池充电！勿在热源（如火或加热器）附近使用或贮存电池！如果电池泄漏或发出异味，应立即将其从接近明火处移开；
- Do not use any chargers other than those recommended.
- 请使用专用充电器！
- Do not reverse the positive (+) and negative (-) terminals.
- 勿将正负极接反！
- Do not connect the battery directly to wall outlets or car cigarette-lighter sockets.
- 勿将电池直接连接到墙上插座或车载点烟式插座上！
- Do not put the battery into a fire or apply direct heat to it.
- 勿将电池投入火中或给电池加热！
- Do not short-circuit the battery by connecting wires or other metal objects to the positive (+) and negative (-) terminals.
- 禁止用导线或其它金属物体将电池正负极短路，禁止将电池与项链、发夹或其它金属物体一起运输或贮存！
- Do not pierce the battery casing with a nail or other sharp object, break it open with a hammer, or step on it.

- 禁止用钉子或其它尖锐物体刺穿电池壳体，禁止锤击或脚踏电池！
- Do not strike, throw or subject the battery to sever physical shock.
- 禁止撞击、投掷或者使电池受到机械震动
- Do not directly solder the battery terminals.
- 禁止直接焊接电池端子！
- Do not attempt to disassemble or modify the battery in any way.
- 禁止以任何方式分解电池！
- Do not place the battery in a microwave oven or pressurized container.
- 禁止将电池置入微波炉或压力容器中！
- Do not use the battery in combination with primary batteries (such as dry-cell batteries) or batteries of different Capacity type or brand.
- 禁止与一次电池（如干电池）或不同容量、型号、品种电池组合使用！
- Do not use the battery if it gives off an odor, generates heat, becomes discolored or deformed, or appears abnormal in any way. If the battery is in use or being recharged, remove it from the device or charger immediately and discontinue use.
- 如果电池发出异味、发热、变形、变色或出现其它任何异常现象时不得使用；如果电池正在使用或充电，应立即从用电器中或充电器上取出并停止使用！

Caution!**注 意！**

Do not use or store the battery where is exposed to extremely hot, such as under window of a car in direct sunlight in a hot day. Otherwise, the battery may be overheated. This can also reduce battery performance and/or shorten service life.

不要使用处于极热环境中的电池，如阳光直射或热天的车内。否则，电池会过热，可能着火（点燃），这样就会影响电池的性能、缩短电池的使用寿命。

If the battery leaks and electrolyte gets in your eyes, do not rub them. Instead, rinse them with clean running water and immediately seek medical attention. If left as is, electrolyte can cause eye injury.

如果电池漏液后电解液进入眼睛，不要擦拭，应用水冲洗，立即寻求医疗救助。如不及时处理，眼睛将会受到伤害。

Use the battery only under the following environmental conditions. Failure to do so can result in reduced performance or a shorten service life. Recharging the battery outside of these temperatures can cause the battery to overheat, explode or catch fire.

只能在下述条件下使用电池，否则将会降低电池的性能或缩短电池的使用寿命。

Operating environment:

工作环境

When charging the battery: 0°C ~ 45°C

充电：0°C ~ 45°C

When discharging the battery: -20°C ~ 60°C

放电: -20°C ~ 60°C

When stored up to 30 days: -20°C ~ 60°C

储存 30 天：-20°C ~ 60°C

When stored up to 90 days: -20°C ~ 45°C

储存 90 天 : -20°C ~ 45°C

When stored up to 365 days: -20°C ~ 25°C

储存 365 天 : -20°C ~ 25 °C

6.Amendment of this Specification 产品规格书的修订

This specification is subject to change with prior notice.

本公司有权对本产品规格书进行修订，在对产品规格书修订后东莞市钜大电子有限公司将会通知客户。

Functional requirements of supporting charger

配套充电器功能要求

The main function of the charger is to charge the battery. During the design process, the main functions and technical indexes of the charging management power module are designed in detail. Chargers are mainly divided into ac-dc and dc-dc charging management systems. Chargers are generally divided into four charging modes: pre-charging stage, constant current charging stage, constant voltage charging stage and cut-off charging stage. Then, charging management requires charging current regulation, charging voltage detection, charging current detection, abnormal charging off and other functions. The specific requirements are as follows:

充电器的主要功能是给电池充电；设计过程中主要对充电管理电源模块的主要功能、主要技术指标进行详细设计；充电器主要分为 AC-DC 和 DC-DC 两部分充电管理系统，充电器通常分为预充充电阶段、恒流充电阶段、恒压充电、截止充电阶段，共四个阶段充电模式。那么，充电管理要求具备充电电流调节、充电电压侦测、充电电流侦测、充电异常关断等功能，具体要求如下：

1-1 Input protection function requirements 输入保护功能要求

1-1-1 Over voltage protection: over voltage protection closes the output.

过压保护：过压保护关闭输出。 (一类要求)

1-1-2 Under voltage protection: under voltage protection closes the output.

欠压保护：欠压保护关闭输出。 (二类要求)

1-1-3 Over current protection: fuse over current protection.

过流保护：保险丝过流保护。 (一类要求)

1-1-4 Reverse connection protection: reverse connection can protect, can't damage charge management.

反接保护：反接能够保护,不能损坏充电管理。 (二类要求)

1-2 Output protection function requirements 输出保护功能要求

1-2-1 Over voltage protection: over voltage protection to close the output, restart the input recovery.

过压保护：过压保护关闭输出，重启输入恢复。 (一类要求)

1-2-2 Under voltage protection: under voltage protection to close the output, restart the input recovery.

欠压保护：欠压保护关闭输出，重启输入恢复。 (一类要求)

1-2-3 Over current protection: over current protection closes the output, restarts the input recovery.

过流保护：过流保护关闭输出，重启输入恢复。 (一类要求)

1-2-4 Short circuit protection: short circuit protection to close the output, restart the input recovery.

短路保护：短路保护关闭输出，重启输入恢复。 (一类要求)

1-2-5 Reverse protection: reverse protection closes output and restarts input recovery.

反接保护：反接保护关闭输出，重启输入恢复。 (二类要求)

1-2-6 Over temperature protection of charger: protect the output by shutting off, and automatically restore the output after over-temperature removal.

充电器过温保护：保护关断输出，过温移除后自动恢复输出。

(二类要求)

1-3 Other functional requirements 其他功能要求

1-3-1 Pre-charge function: yes 预充功能：有

(一类要求)

1-3-2 Term-charge shut off function: yes 充满截止关断功能：有

(一类要求)

1-3-3 Automatic recharging function: yes 自动回充功能：有

(二类要求)

1-3-4 Prevent battery leakage function: yes 防止电池漏电功能：有

(二类要求)

1-3-5 Output ripple voltage requirement: yes 输出纹波电压要求：有

(二类要求)

Note: the matching charger must have the above class I functions, and the class II functions are recommended. Otherwise, the quality abnormality and safety accident caused by charging the charger to the battery shall be borne by the customer.

备注说明：配套充电器以上一类功能要求一定有，二类功能建议要有，否则因充电器充电给电池带来的品质异常及安全事故由客户自行承担。

LARGE BATTERY