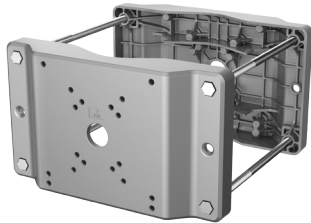


DH-PFA153-SG

Heavy-duty Pole Mount Bracket



- Built of aluminum alloy and stainless.
- Strong load-bearing capacity.
- Supports two-sided installation.
- Designed for multiple types of poles that are 150-300 mm wide.



Series Overview

Dahua Mounting Bracket works with front-end services, supporting installation methods such as wall mount, pole mount, corner mount and in-ceiling mount. Select brackets are designed to suit complex scenes, making them convenient to use in environments with high temperatures, humidity, frequent vibrations, and in locations that are highly corrosive. These highly reliable brackets are easy to install and use.

Scene

Ideal for mounting cameras, and works in temperatures ranging from -40°C to $+60^{\circ}\text{C}$ (-40°F to $+140^{\circ}\text{F}$) and in environments with a relative humidity of less than 90%.

Technical Specification

Structure

Casing Material	Aluminum alloy, stainless
Product Dimensions	359.1 mm × 60.0 mm × 213.1 mm (14.14" × 2.36" × 8.39") (L × W × H)
Appearance Color	Silver gray
Net Weight	5.0 kg (11.02 lb)
Gross Weight	5.7 kg (12.57 lb)
Load Bearing	35.0 kg (77.16 lb)
Installation	Pole mount
Pole Diameter	Φ150 mm–300 mm (Φ5.91"–11.81")
Applicable Model	Please see "Camera Accessories Selection"
Packaging Dimensions	489.0 mm × 219.0 mm × 341.0 mm (19.25" × 8.62" × 13.43") (L × W × H)

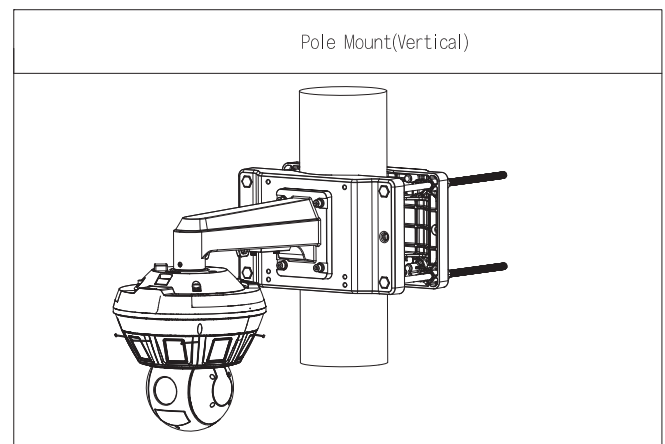
Environment

Operating Temperature	-40°C to $+60^{\circ}\text{C}$ (-40°F to $+140^{\circ}\text{F}$)
Operating Humidity	< 90% (RH)
Storage Temperature	-40°C to $+60^{\circ}\text{C}$ (-40°F to $+140^{\circ}\text{F}$)
Storage Humidity	10%–90% (RH)
Anti-corrosion Level	Basic Protection

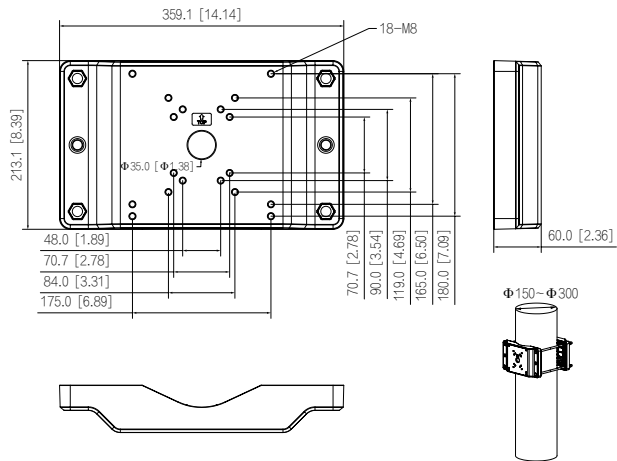
Ordering Information

Type	Model	Description
Camera Mount Series	DH-PFA153-SG	Heavy-duty Pole Mount Bracket

Installation



Dimensions (mm[inch])



Package Information

- Heavy-duty pole mount bracket body × 2
- M12×360 bolt × 4
- M8×35 screw × 4
- M12 nut × 8
- Cable tie × 1
- Anti-slide sleeve × 1
- S6.0 wrench × 1
- User manual × 1
- Washer sleeve × 4
- Spring washer × 4