



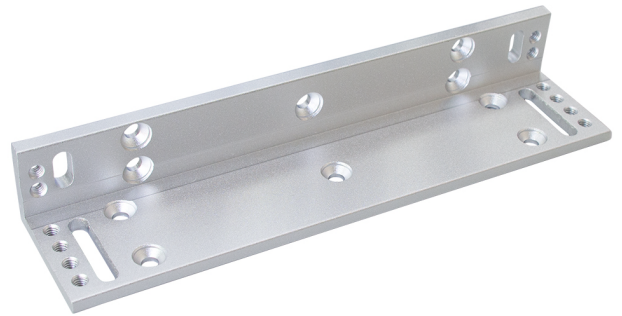
Magnetic Lock L Bracket

Model: SUD-180L

This is a L magnetic lock special stent for access control system, special aluminum, firm and durable, special design, suitable with wooden door and metal door. The best choice of access control, it is easy to install and convenient to use, contact surface anti-skid process, thickened, one-piece bracket, Adjustable screw hole fixing.

► Product Parameter

Model	SUD-180L
Product Name	L Bracket for Outward door
Material	High Strength Aluminum, Sandblast Finish
Suitable	Narrow Door
Opening Mode	90 Degree Door
Finish for Shell	Anodized aluminum
Applicable electric lock	SUD-180
Weight	0.14KG



► Dimensions

